

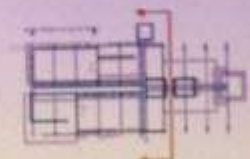
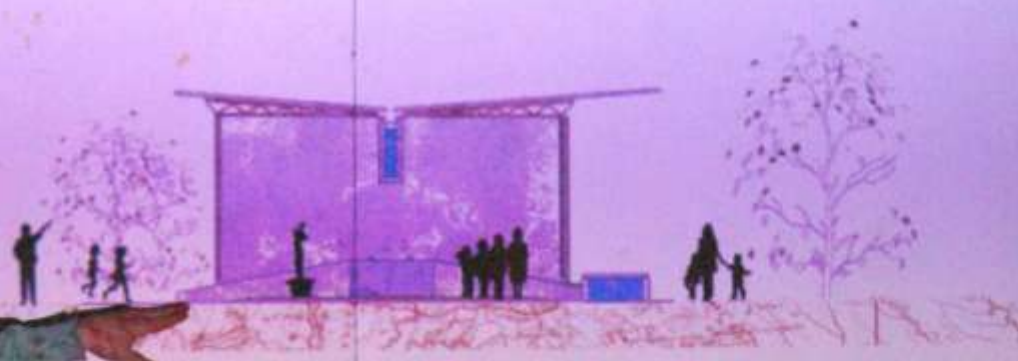
# Mozambique - Being an architect in a foreign cultur



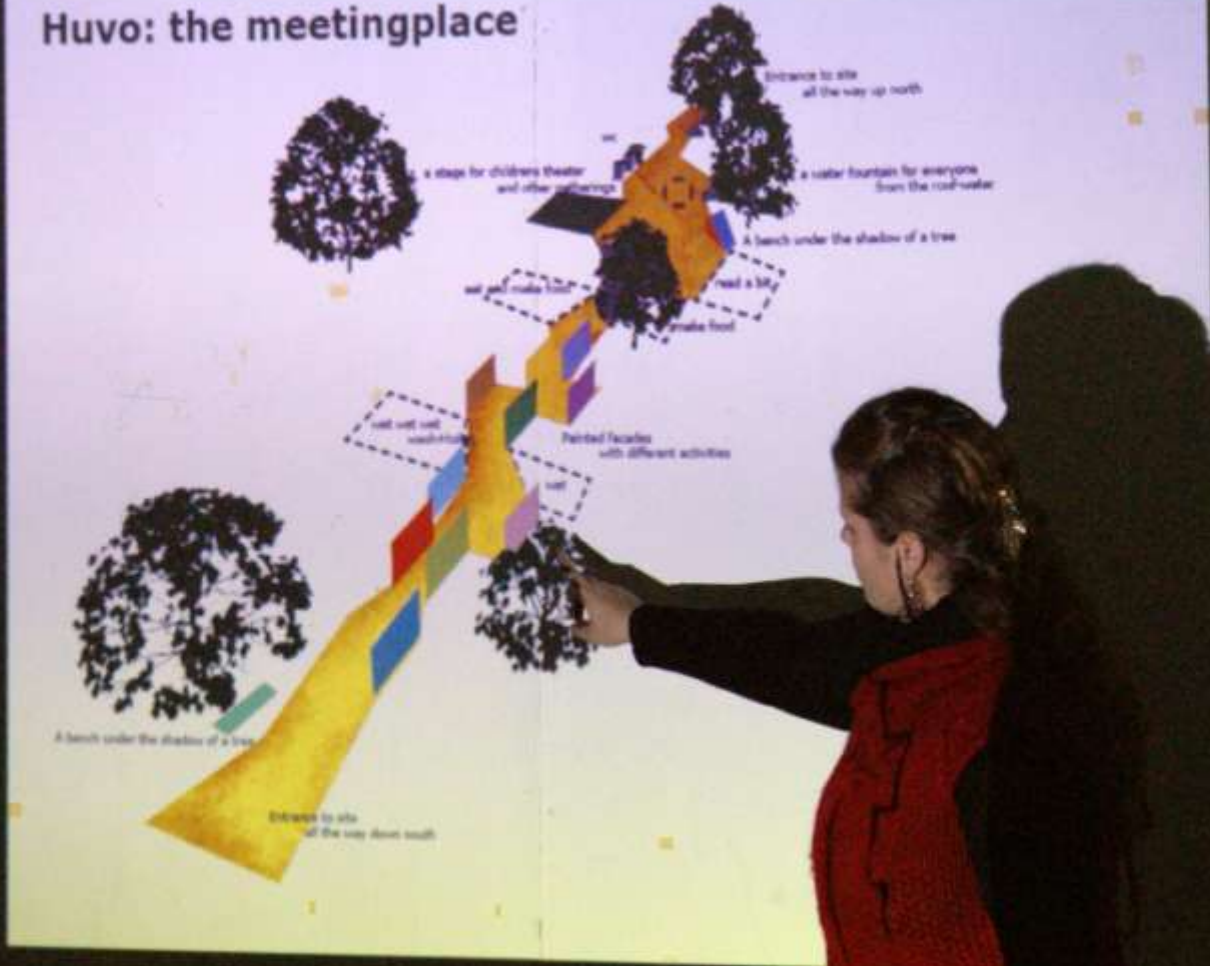




SECTION BB  
1:50



# Huvo: the meetingplace



**MATERIALS**  
in construction



Corrugated steel



Straw wall



Concrete wall



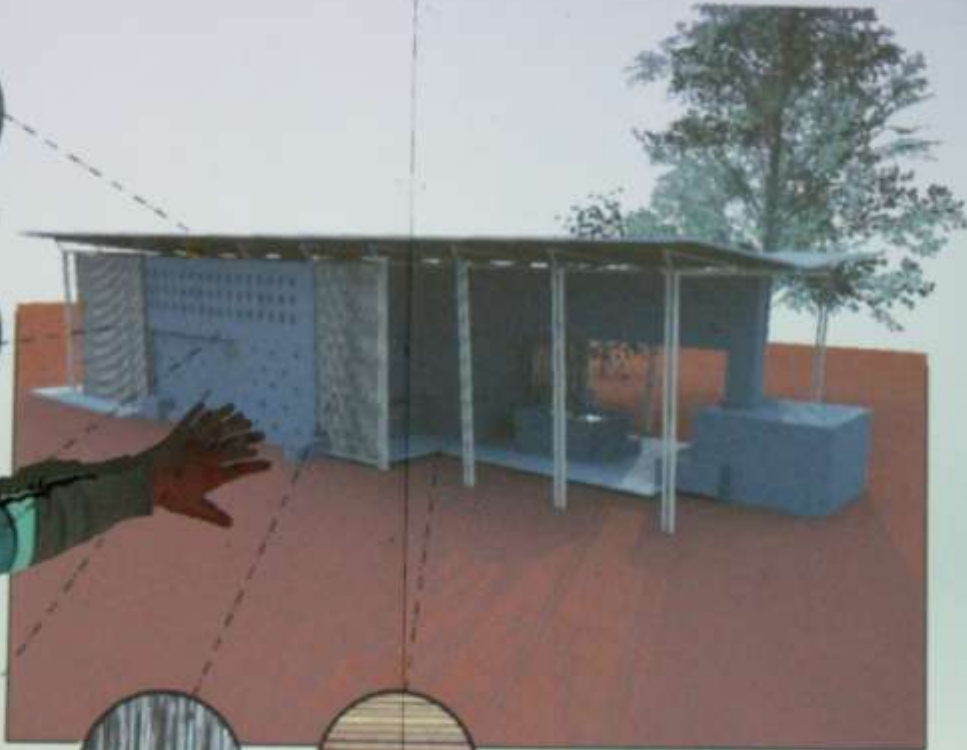
Stone wall



Light straw-wall



Wooden floor



THE DOPFARAGE OPENING

WIND 2.100



THE 3.000 METER THERMAL OPENING IN THE CENTER



WIND PROTECTION FROM THE WINDYEST LEVEL, THROUGH THE WINDY PROTECTION AREA, THE 1.000 METER.



THE WIND PROTECTION TO THE COURTYARD, FROM THE 1.000 METER THROUGH THE WINDY PROTECTION AREA, THE 1.000 METER TO THE FRONT OF THE 1.000 METER.

