

THE BAS HOLDBAR SEMINAR 2012. 26-27th JANUARY.

DAY ONE: Holdbar at BAS

The Future Priorities of the Sustainability teaching at BAS. We pose the questions: Is the sustainability teaching at each level adequate and relevant to the challenges ahead and is the teaching at the different levels at BAS well enough tied together? The Goal of the day : To draft an updated Sustainability strategy.

DAY TWO: Bergen as case for Densification.

The scattered, provincial development of Bergen over the last 50 years has resulted in an extremely transport-demanding structure. We need to rethink this and also redefine the role of planning to take advantage of a more multidisciplinary approach leading to densification. This will be the Holdbar Seminar's Day Two theme. It will be coupled with the introduction of the one and only Master course for spring 2012; "*Bergen Density Studies*". Teachers: S333 - London / Thomas Wiesner / John Pløger / Sixten Rahlff / Harald N. Røstvik.
The Goal of the day: To discuss Bergen as a case and kick-off for the Master course.

DAY ONE

Thurs 26.1. HOLDBAR AS BAS. OPEN TO ALL AT BAS.

- 0930-1015 Welcome and introduction "The challenge". Harald N. Røstvik.
- 1015-1130 Teaching Sustainability at different levels, today's Intentions, Strengths, Weaknesses coupled with thoughts on improvements:
- 1st part: Year 1. Ragni Helweg.
Year 2. Inga Lindstrøm.
Year 3. Magnus Wåge substitute.
- 2nd part: Year 4,5. Sixten Rahlff.
- 1130-1215 Students & teachers. Prepared or spontaneous comments & proposals.
- 1215-1300 Lunch
- 1300-1345 Lars Bylund. Review of sustainable teaching at various schools.
- 1345-1430 Students & teachers. Prepared or spontaneous comments & proposals.
- 1430-1500 Coffee/Tea Break
- 1500-1600 Discussion of where we are heading, formulating our goals.
- 1600-1615 Summary and next step.

DAY TWO

Fri 27.1. BERGEN AS CASE FOR DENSIFICATION. OPEN TO ALL AT BAS.

0930-1000 Welcome and introduction. Sixten Rahlff

1000-1515 The lectures & the responses:

1000 - 1045 - Thomas Wiesner. Teacher DAV

1045 - 1100 - Responses

1100 - 1200 - Jonathan Woodroffe & Jerome Picard, S333. Teachers 1/APP

1200 - 1215 - Responses

1215 - 1315 - Lunch

1315 - 1400 - Harald N. Røstvik, Teacher TTA

1400 - 1415 - Responses

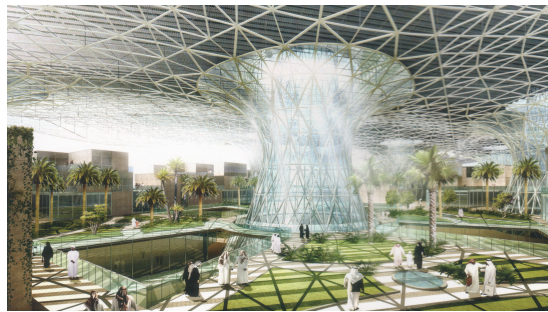
1415 - 1500 - John Pløger. Teachers KTF – Theory

1500 - 1515 - Responses

1515-1530 Coffee/Tea Break

1450-1600 Discussion

1600-1615 Wrap up



WELCOME TO ALL BAS STUDENTS AND TEACHERS !